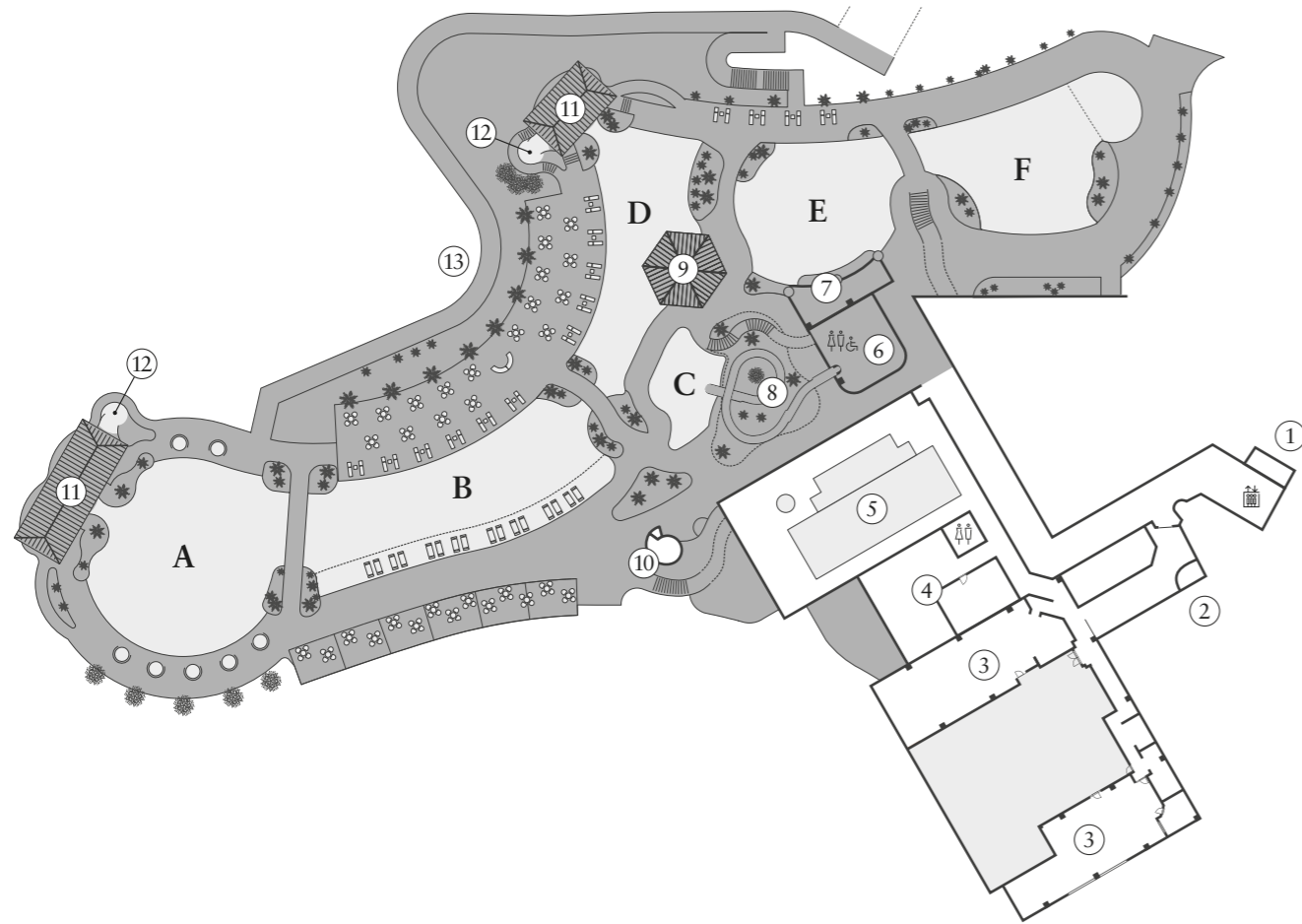




ORIENTAL HOTEL  
OKINAWA RESORT & SPA

*Floor Plan*

## | Garden Pool 1F



- |                 |                         |              |
|-----------------|-------------------------|--------------|
| ① Laundry       | ⑥ Garden Pool Reception | ⑪ Gazebo     |
| ② Spa Reception | ⑦ Changing Room         | ⑫ Vibra-Bath |
| ③ Spa           | ⑧ Water Slide           | ⑬ Walk Way   |
| ④ Fitness Gym   | ⑨ Pool Side Bar         |              |
| ⑤ Indoor Pool   | ⑩ Sauna                 |              |

## | Guest Room Floors 5~15F



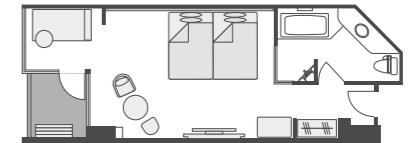
### Superior

- Room Location 5-7F
- Number of Rooms 72 rooms
- Capacity 5 people

### High Floor Superior

- Room Location 8-13F
- Number of Rooms 144 rooms
- Capacity 4 people

- Floor Space 44.6㎡
- Bed Size 1400×2000mm



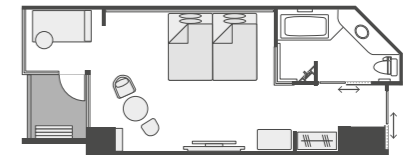
### Universal

- Room Location 5-7F
- Number of Rooms 12 rooms
- Capacity 5 people

### High Floor Universal

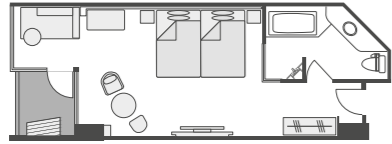
- Room Location 8-13F
- Number of Rooms 24 rooms
- Capacity 4 people

- Floor Space 46.3㎡
- Bed Size 1400×2000mm



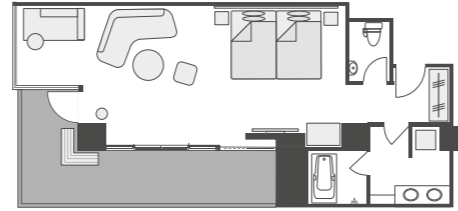
### Club Room

- Room Location 14-15F
- Number of Rooms 56 rooms
- Capacity 3 people
- Floor Space 44.6m<sup>2</sup>
- Bed Size 1400×2000mm



### Club Corner

- Room Location 8-13F
- Number of Rooms 12 rooms
- Capacity 4 people
- Floor Space 64.9m<sup>2</sup>
- Bed Size 1400×2000mm

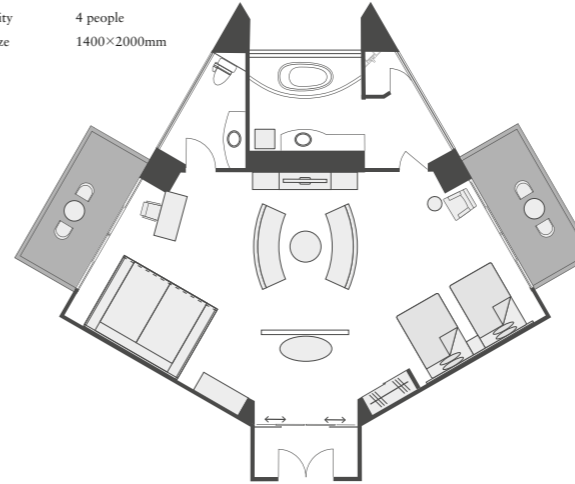


### Club Corner Premium

- Room Location 14-15F
- Number of Rooms 4 rooms
- Capacity 4 people

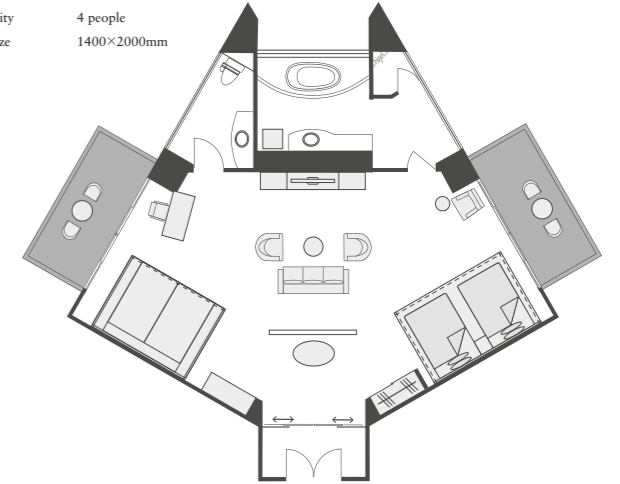
### Panorama Ocean Suite

- Room Location 5-9F
- Number of Rooms 5 rooms
- Floor Space 109.0m<sup>2</sup>
- Capacity 4 people
- Bed Size 1400×2000mm



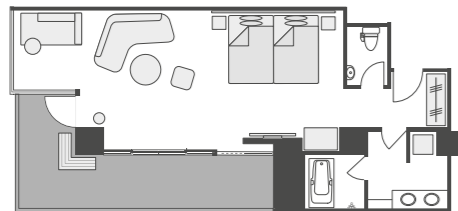
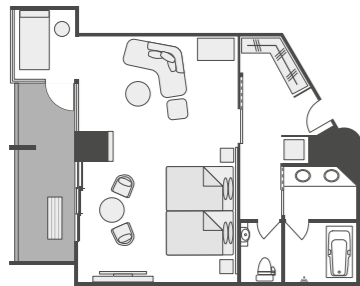
### Panorama Ocean Suite Premium

- Room Location 10-13F
- Number of Rooms 4 rooms
- Floor Space 109.0m<sup>2</sup>
- Capacity 4 people
- Bed Size 1400×2000mm



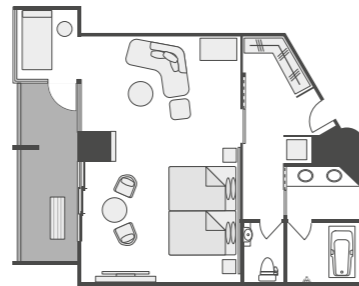
### Superior Grande

- Room Location 5-7F
- Number of Rooms 12 rooms
- Capacity 4 people
- Floor Space 64.9 - 68.4m<sup>2</sup>
- Bed Size 1400×2000mm



### Club Ocean

- Room Location 8-13F
- Number of Rooms 12 rooms
- Capacity 4 people
- Floor Space 68.4m<sup>2</sup>
- Bed Size 1400×2000mm

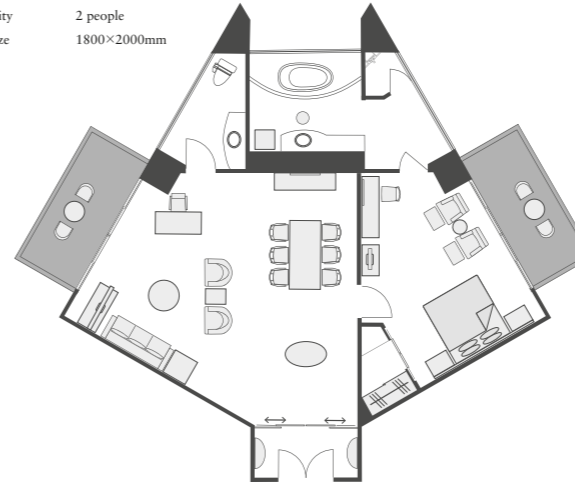


### Club Ocean Premium

- Room Location 14-15F
- Number of Rooms 2 rooms
- Capacity 4 people

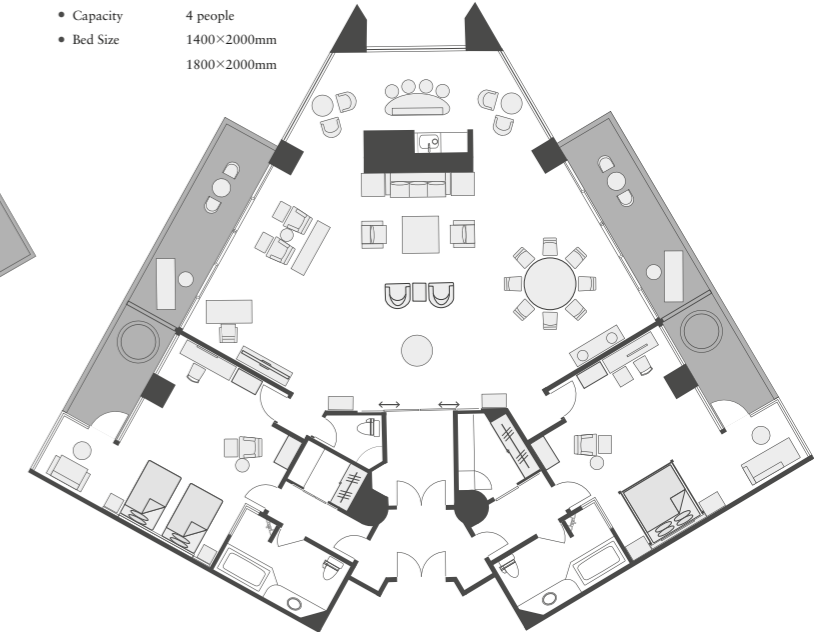
### Crown Suite

- Room Location 14F
- Number of Rooms 1 room
- Floor Space 109.0m<sup>2</sup>
- Capacity 2 people
- Bed Size 1800×2000mm



### Royal Suite

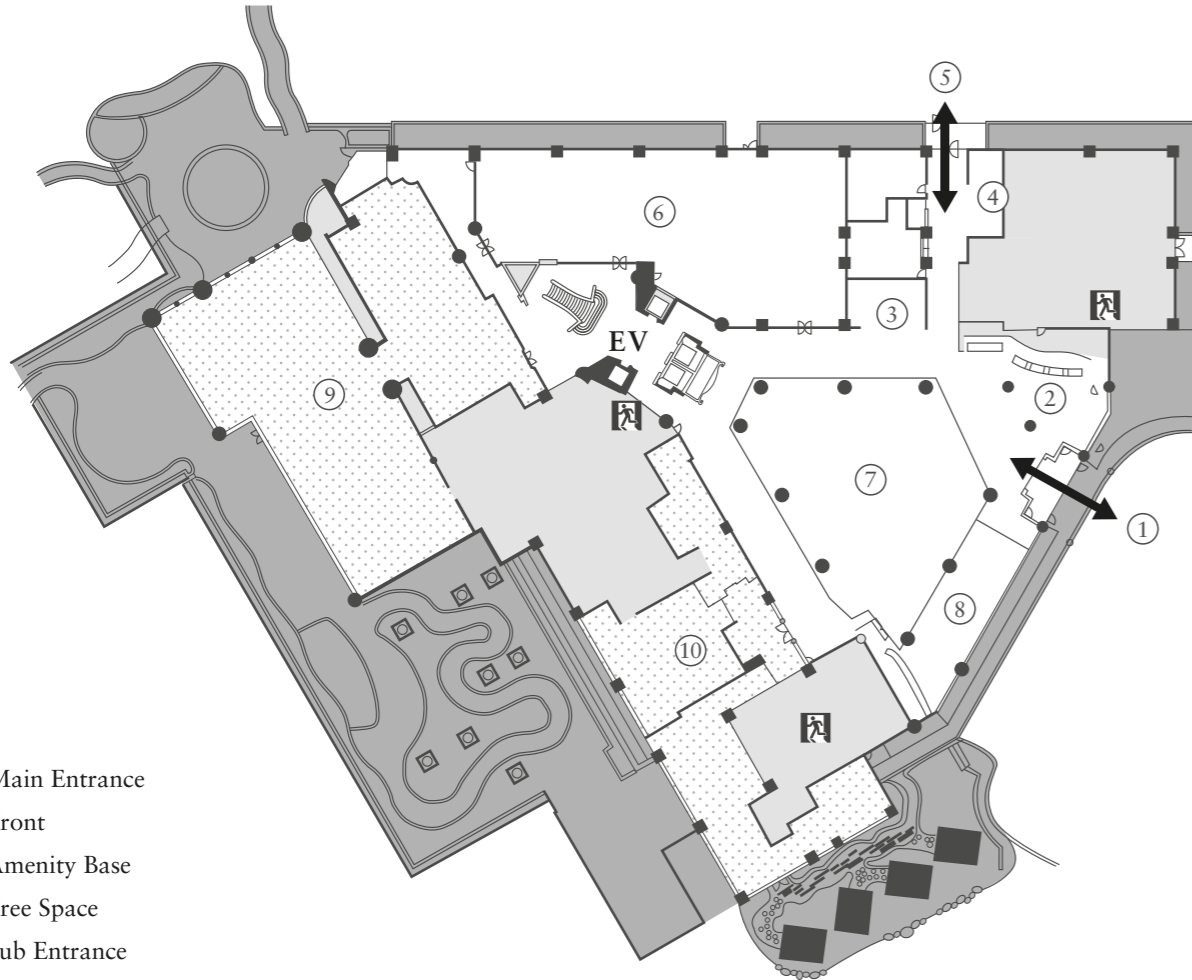
- Room Location 15F
- Number of Rooms 1 room
- Floor Space 249.3m<sup>2</sup>
- Capacity 4 people
- Bed Size 1400×2000mm
- Bed Size 1800×2000mm



\*There are two types of Superior Grande Rooms.



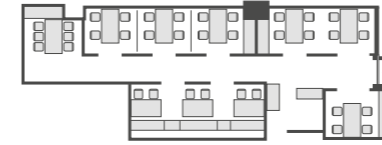
# | Lobby Floor 2F



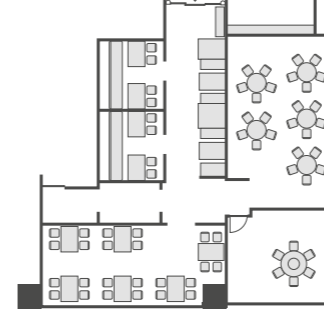
- ① Main Entrance
- ② Front
- ③ Amenity Base
- ④ Free Space
- ⑤ Sub Entrance
- ⑥ Shop
- ⑦ Club Lounge
- ⑧ Lobby Lounge
- ⑨ Restaurant (Buffet Restaurant)
- ⑩ Restaurants (Okinawa Yakiniku / Chinese Dining / Okinawan Dining)

# | Restaurants

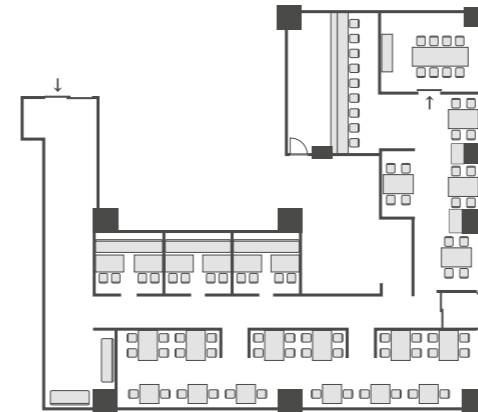
Okinawa Yakiniku • Capacity 42 seats



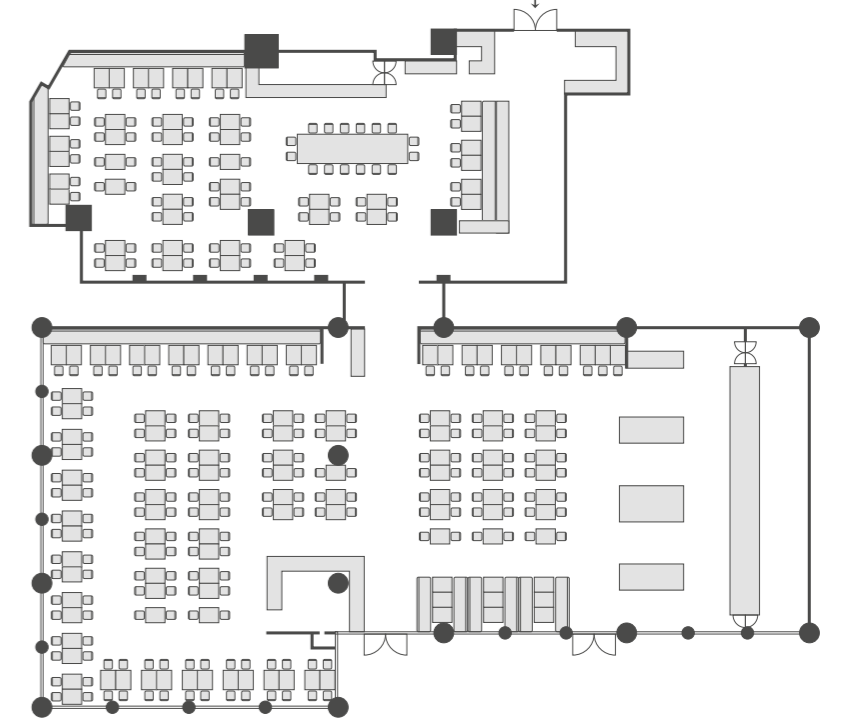
Chinese Dining • Capacity 79 seats



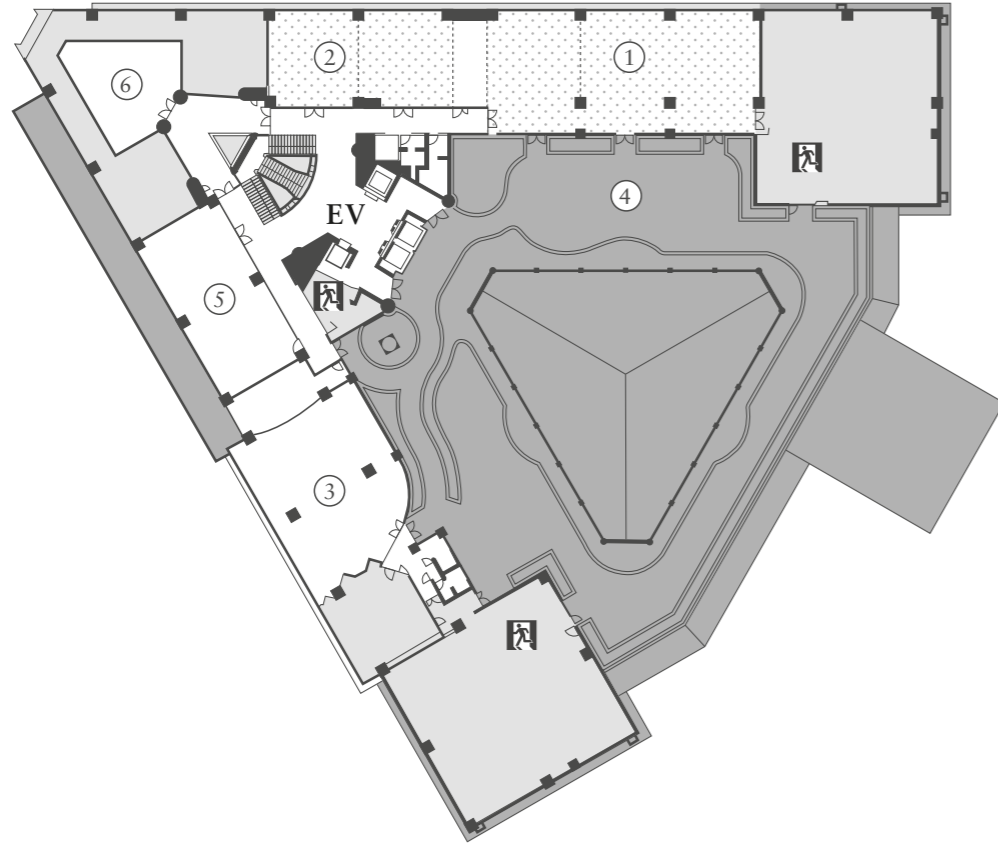
Okinawan Dining • Capacity 84 seats



Buffet Restaurant • Capacity 346 seats (including additional free space 114 seats)

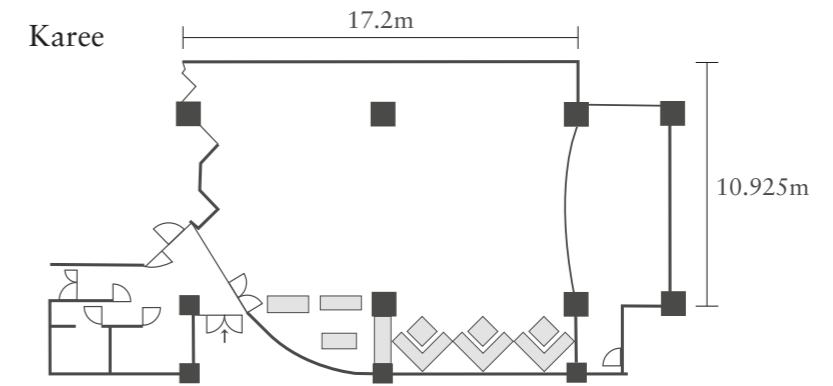
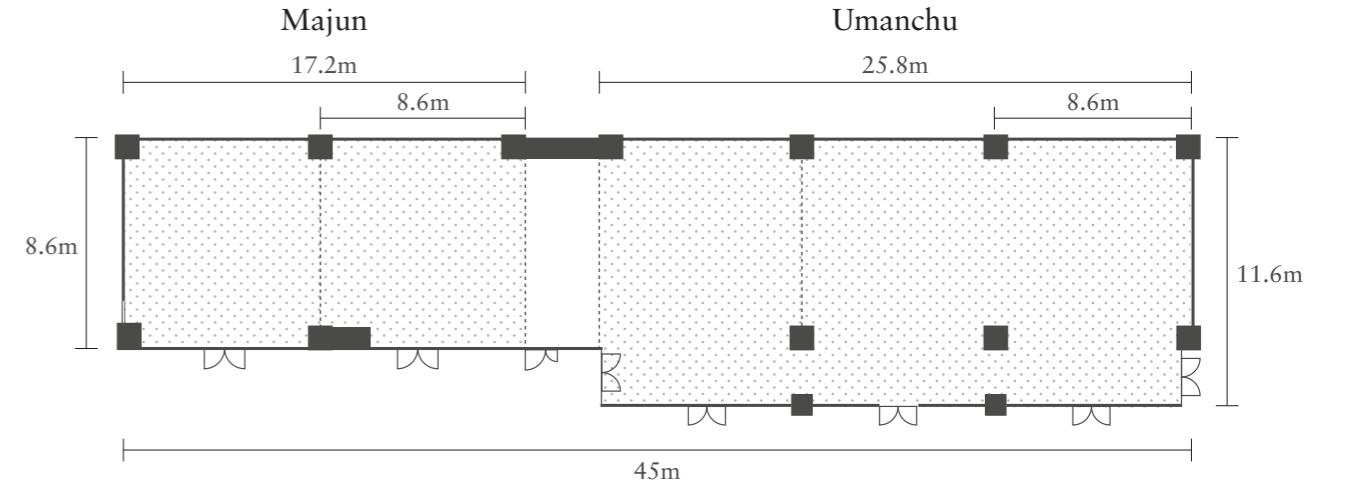


## | Banquet Rooms 3F



- ① Umanchu
- ② Majun
- ③ Karee
- ④ Courtyard
- ⑤ Bridal Salon
- ⑥ Chapel

## | Banquet Hall



Banquet Room Name	Floor	Standing	Formal Setting	Seated	School Style	Theater Style	m	Area (m <sup>2</sup> )	Ceiling Height
Umanchu	3F	150	104	130	117	200	8.6×25.8	299	3.5
Majun	3F	80	56	70	72	100	8.6×17.2	148	3.5
Umanchu + Majun	3F	280	192	240	198	310	8.6×45.0	456	3.5
Karee	3F	120	64	100	72	130	8.6×21.5	185	3.5
Poolside	1F	250	-	200	-	-	7.5×48.0	480	-